



THE ASPEN



THE ASPEN

Model number: 37FAC32643AH19

3 beds • 2 baths • 2048 sq.ft. • 32' width • 64' depth

Our home building facilities invest in continuous product and process improvements. Plans, dimensions, features, materials, specifications and availability are subject to change without notice or obligation. Renderings and floor plans are representative likenesses of our homes and may differ from the actual homes. We invite you to tour a Home Center near you and inspect the highest value in quality housing available or call (912) 333-9100 to speak with a Home Consultant. Copyright 2017, CMH. All rights reserved.

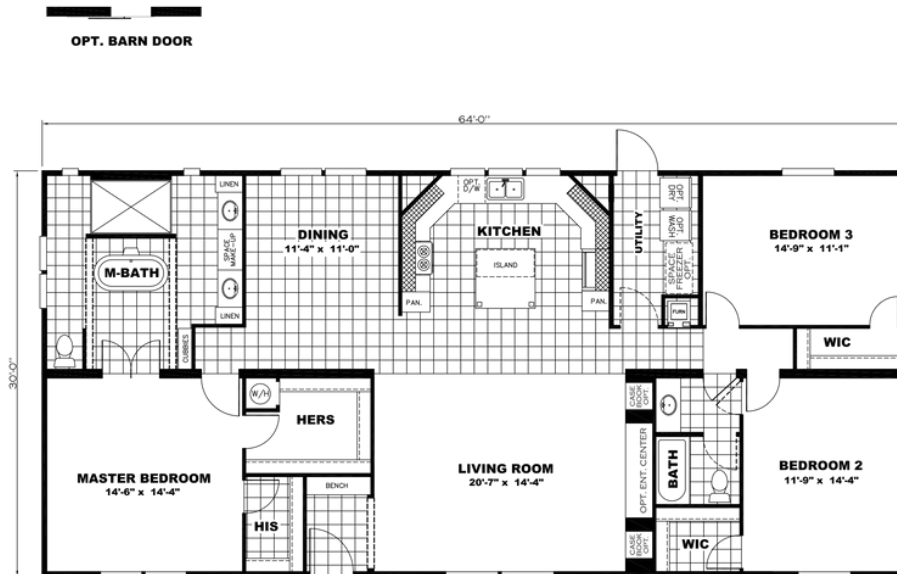
<https://www.claytonhomesofhinesville.com>

CLAYTON HOMES- HINESVILLE

1207 WEST OGLETHORPE
HWY
HINESVILLE, GA 31313

Monday - Thursday: 9am to 6pm
Friday: 9am to 6pm
Saturday: 9am to 5pm
Sunday: Closed

(912) 333-9100



THE ASPEN Model number: 37FAC32643AH19

3 beds • 2 baths • 2048 sq.ft. • 32' width • 64' depth

Our home building facilities invest in continuous product and process improvements. Plans, dimensions, features, materials, specifications and availability are subject to change without notice or obligation. Renderings and floor plans are representative likenesses of our homes and may differ from the actual homes. We invite you to tour a Home Center near you and inspect the highest value in quality housing available or call (912) 333-9100 to speak with a Home Consultant. Copyright 2017, CMH. All rights reserved.

<https://www.claytonhomesofhinesville.com>

**CLAYTON HOMES-
HINESVILLE**

**1207 WEST OGLETHORPE
HWY
HINESVILLE, GA 31313**

Monday - Thursday: 9am to 6pm
Friday: 9am to 6pm
Saturday: 9am to 5pm
Sunday: Closed

(912) 333-9100